



The Provider

The Provider is a publication of the
New Jersey Family Child Care Providers' Association.

Volume 14, Issue #2

"NJFCCPA, professionals at the heart of child care..."



A Message from the President!

The NJFCCPA has proven to be the model for all states because of our successful partnership with our state and local child care organizations as we represent and promote professionalism for family child care at the state and legislative level.

The first ever FCC Conference 2007, held on May 24th, created the most profound and lasting impression on the minds and hearts of all family child care providers in NJ. We saw key organizations like the FCCO(Family Child Care Organization of NJ), NJACCRRRA (New Jersey Association of Child Care Resource & Referral Agencies), EAFCC (Educational Association for Family Child Care) and Professional Impact NJ, that administers the NAFCC Accreditation Scholarship Program come together and partner with the NJFCCPA to hold the 1st ever statewide Collaborative Conference just for family child care providers.

These associations donated funds as well to ensure affordability while giving the providers a great location- the Crowne Plaza Hotel, excellent fare, great choices in training workshops and the best Keynote Speaker - Jeff Johnson, NAFFC Board member, FCC Provider and powerful author and Speaker. We were even graced by the presence of Sue Williamson, President of The National Association for Family Child Care, who addressed the providers and stressed the importance for all providers joining their State Association and increasing professionalism among family child care providers. All attendees received a tote bag.

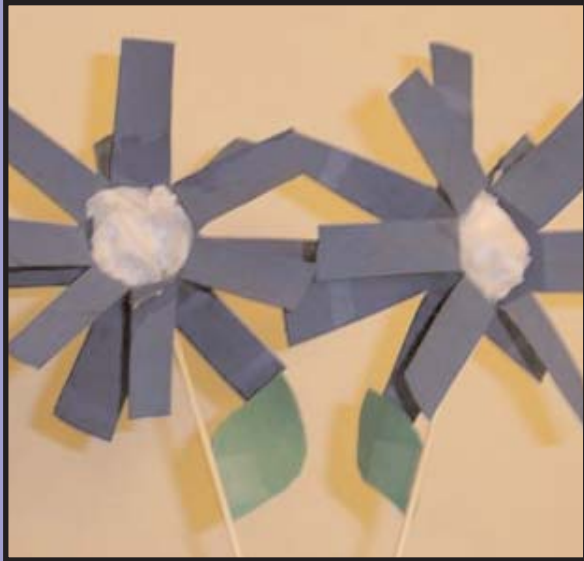
The providers were overwhelmed by the number of great door prizes. It was a fun yet rewarding experience for the providers that attended since they received meaningful training hours as well. Encouraged by the positive responses received, these 5 organizations will continue to channel their efforts to make this Conference into an annual event. I encourage all family childcare providers do be a member of NJFCCPA, our State Association and be a stronger voice for family child care.

*Thank you,
Jan Coelho*

JULIE'S JUNQUE!

submitted by Julie Payne

Paper-Tube Flowers



Items needed:

- Paper towel or toilet paper tubes
- scissors
- pencil
- assorted paints and paintbrush
- tissue or toilet paper
- Green construction paper or "colored" paper
- straws

Instructions:

Draw two rings in the middle of paper tube making a 1 inch circle in diameter in center of each tube.

From each end of tube cut lines every 1/2 inch or so into the center ring marks.

Fold "petals" upward towards center of tube.

Paint flower and straw, then let dry.

Cut out leaves from green construction paper or colored paper and tape onto skewer.

With adult help push the straw through the center ring of each flower.

"Thread" tissue or toilet paper through the center of each flower and crumple around piercing straw.

BE SAFE!

Always be careful to supervise the children during any activity. Activities with small parts are not intended for children under age 3.

Are the children in your care ready to start kindergarten?

KidCrafters offers math, science, literacy activities, arts & crafts and more - fun & inexpensive!

Try a month at half price - no further obligation (new customer prices start as low as \$15)

With other programs, you order & pay for each child each month. With the KidCrafters program, you have an open license to use the activities whenever you wish in your own classroom or home. You print your own pages, so the cost is the same regardless of how many children you care for. It's very easy to store the CD and use the activities from year to year. Visit our web page for lists of theme units available & a one-day sample download. Please contact us with any questions.

KidCrafters Preschool Program
2387 County Highway 18
South New Berlin NY 13843-3157
1.800.849.3459
E-mail: inquiry@kidcrafters.com
Web site: www.kidcrafters.com



The New Jersey Family Child Care Providers' Association

Board Members

President- Tan Coelho
Past President - Tina Foley
Vice-President - Roselle Coye
Treasurer - Gloria Johnson
Membership Secretary - Alycia Walton - 609-239-8012
Recording Secretary - Julie Payne
Newsletter Editor - Tina Foley
Servicios para Miembros -Open

Northern Regional Representative - OPEN

Bergen County - Sue Ellen Sallemi
Essex County - Open
Hudson County - Open
Morris County - Danielle Syracuse
Lisa Mani
Passaic County - Linda Cook
Sussex County - Michelle Melgarejo
Warren County - Open

Central Regional Representative - Roselle Coye - 732-968-0381

Hunterdon County - Darlene Blanchard
Mercer County - Open
Middlesex County - Roselle Coye
Monmouth County - Michele Gregorio
Somerset County - Julie Payne * Michelle Misiura
Union County - Open

Southern Regional Representative - Alycia Walton

Burlington County - Gloria Johnson and Lil Rollins
Atlantic County * Camden County * Cape May * Cumberland County *
Gloucester County * Ocean County * Salem County

For information to become involved in the south, contact Alycia Walton
who is currently reorganizing the southern region - 609-239-8012

HAVE YOU JOINED AFFINITY YET?

As a credit union, Affinity is a not-for-profit cooperative owned and managed for the benefit of its members. That means that unlike a bank, our earnings are passed on to members in the form of better interest rates on deposits and loans.

For more information, contact Robin Glazar at 800-325-0808 ext. 3879
or robing@affinityfcu.com.



NJ Family Child Care
Providers' Association
88 Vincent Drive
Burlington Township, NJ 08016

PROVIDER'S POCKETS

By Michelle Misiura

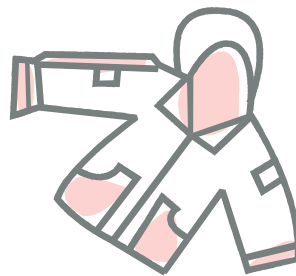
I am the pockets
sewn on the coat
worn by the provider
who loves children the most.

I am the pockets
slightly tattered from wear
no time for fixing
others need care.

I am the pockets
full of hats and gloves
for heads and hands need warmth
and children need love.

I am the pockets with dried tears
inside

I am the closet when hugs are
applied.



I am the pockets
full of many things

Full of all the love and
joy a provider brings!!!!